

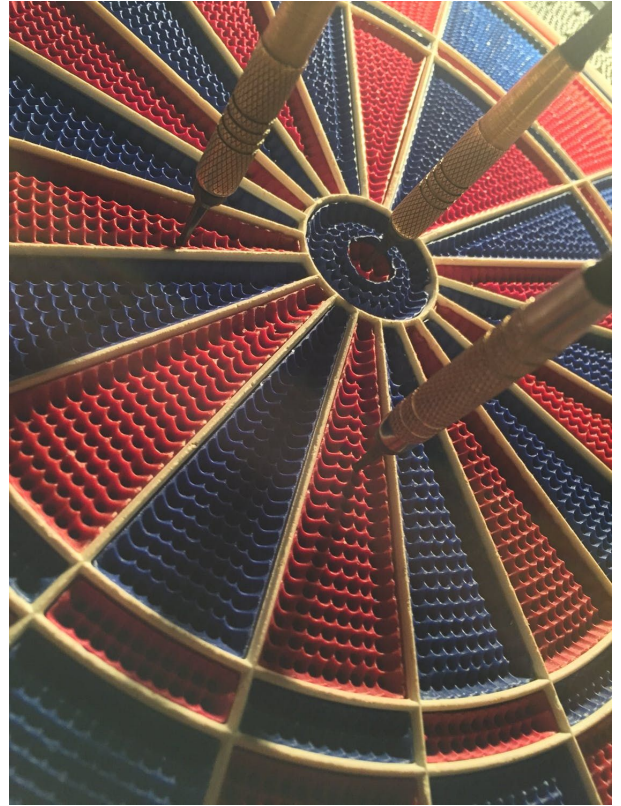


A Sage International School

Lottery Information

Learning Targets

1. Understand the foundational philosophies behind the Forge concept.
2. Analyze the differences between Forge and a typical traditional public school.
3. Discuss the known and unknown specific details about daily operations at Forge.
4. Inquire about other information.



Affiliation with Sage International

Same governing board

Same executive director

Same board policy

Separate LEA
state reporting
financials



SAGE
INTERNATIONAL SCHOOL
OF BOISE

Why FORGE?

/fôrj/

verb

1. Make or shape (a metal object) by heating it in a fire or furnace and hammering it.
2. Create (something) strong, enduring, or successful.
3. Move forward gradually or steadily.



Why FORGE?

/fôrj/

verb

1. Make or shape (a metal object) by heating it in a fire or furnace and hammering it.
2. Create (something) strong, enduring, or successful.
3. Move forward gradually or steadily.

- Conditions matter
- Different metals require different treatments
- You can't rush the process
- It takes more than once



#FIREATFORGE

Flexibility

Iteration

Resilience

Empowerment

mindsets
www.forgeintl.org



#FIREATFORGE

Flexibility

Iteration

Resilience

Empowerment

mindsets

www.forgeintl.org



#FIREATFORGE

Foundation

Investigation

Revision

Exploration

learning

www.forgeintl.org



#FIREATFORGE

Feedback

Inquire

Reflect

Extend

assessment

www.forgeintl.org



#FIREATFORGE

Formative

Individual

Restorative

Empathetic

discipline

www.forgeintl.org



empowering
learners to
shape the
future



Mission

Forge International School engages students within an inclusive international learning community, challenging all members to take risks and contribute locally and globally through open-minded inquiry.

Mission

Forge International School engages students within an inclusive international learning community, challenging all members to take risks and contribute locally and globally through open-minded inquiry.

Mission

Forge International School engages students within an inclusive international learning community, challenging all members to take risks and contribute locally and globally through open-minded inquiry.

Mission

Forge International School engages students within an inclusive international learning community, challenging all members to take risks and contribute locally and globally through open-minded inquiry.

Mission

Forge International School engages students within an inclusive international learning community, challenging all members to take risks and contribute locally and globally through open-minded inquiry.

Mission

Forge International School engages students within an inclusive international learning community, challenging all members to take risks and contribute locally and globally through open-minded inquiry.

Mission

Forge International School engages students within an inclusive international learning community, challenging all members to take risks and contribute locally and globally through open-minded inquiry.

Design Elements

1. seek and maintain authorization as an International Baccalaureate World School in all four programs (Primary Years, Middle Years, Diploma, and Career-related).
2. offer second language instruction in Spanish K-12.
3. offer a K-12 college/career exploration and readiness culture.

What makes Forge similar?

1. State funded per pupil
2. Follow SDE guidelines: Common Core, ISAT testing
3. Provide all special services



What makes Forge different?

1. Charter school facilities funding
2. Higher accountability through charter authorization
3. Capped enrollment
4. IB emphasis
5. Professional Development



Calendar and Schedule

Typical start: Aug 12

2019 start: Sept 3

Typical breaks: F/W/S

2019 breaks: W/S

2020 end: June 12

4-Day Week (M-Th)

Start of day: 8:30am

Release: 3:40pm (K-3)

Release: 3:55pm (4-5)

Bus Release: 4:05

Construction Update

Anticipated delivery of building in early August.

Board decision to start school after Labor Day to ease anxiety.

Building A: Admin offices, kitchen, cafe/gym (~10k sq ft)

Building B: Classrooms (~28k sq ft)

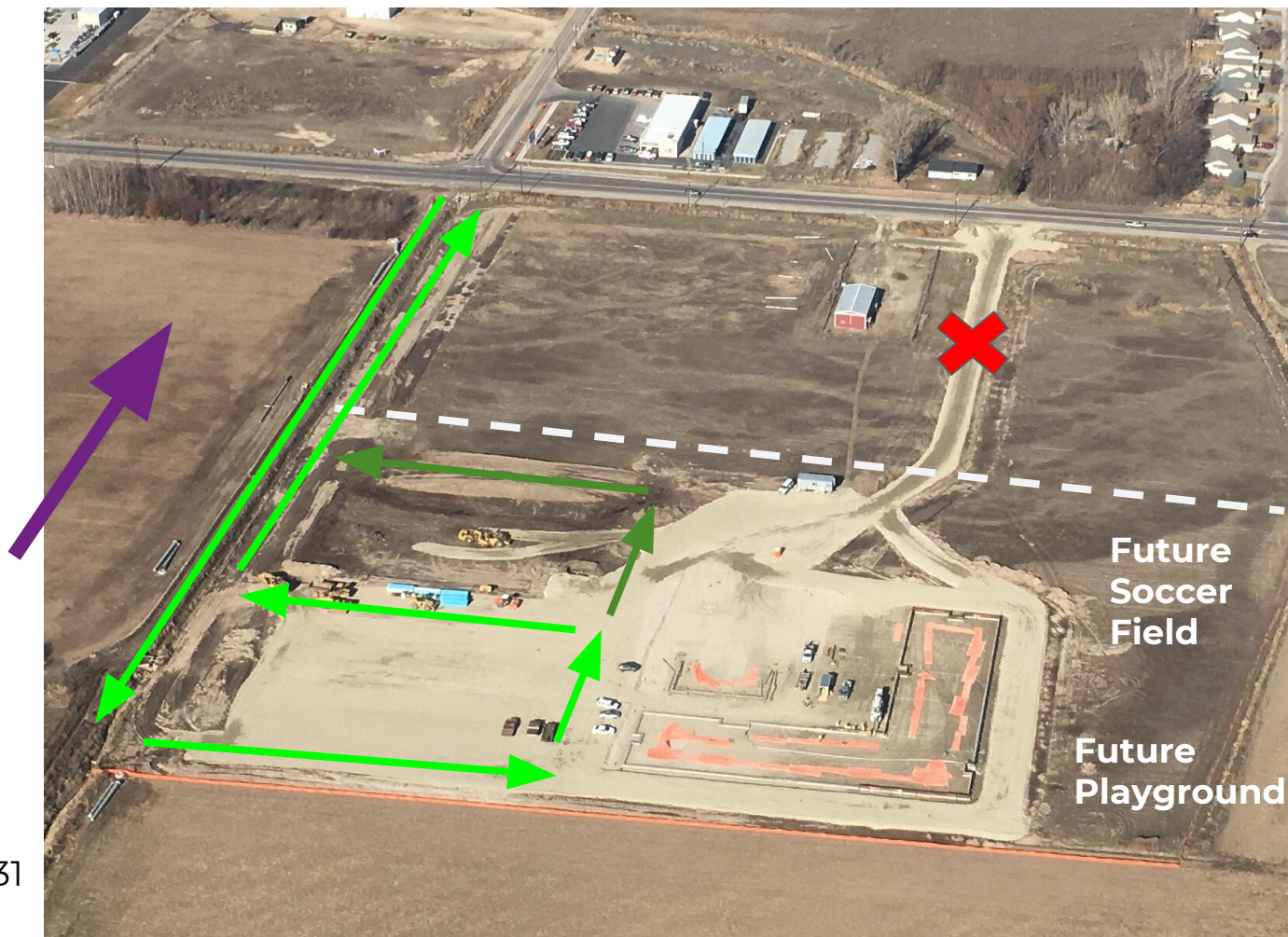




November



January 31



January 31

Calendar and Schedule

Typical start: Aug 12
2019 start: Sept 3

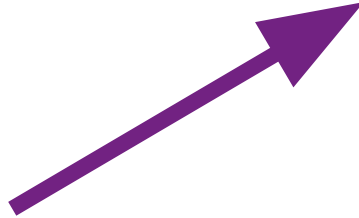
Typical breaks: F/W/S
2019 breaks: W/S

2020 end: June 12

4-Day Week (M-Th)

Start of day: 8:30am
Release: 3:40pm (K-3)
Release: 3:55pm (4-5)

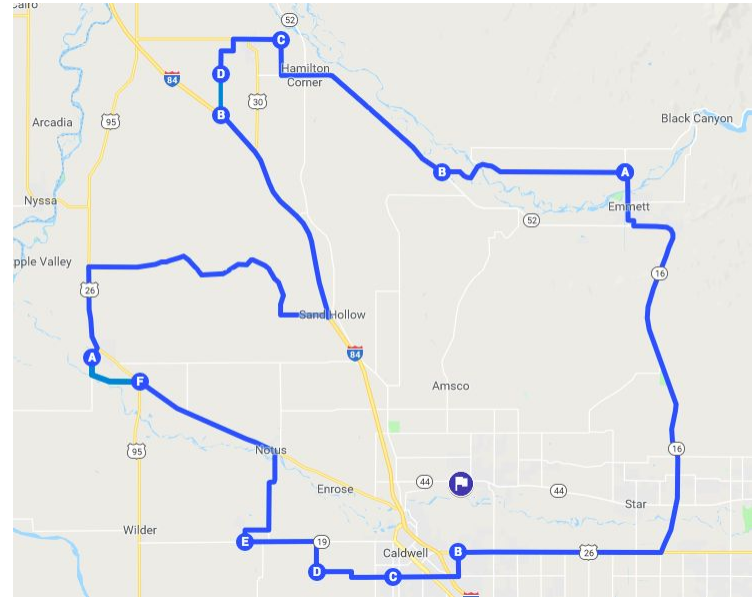
Bus Release: 4:05



Transportation

1. Planning 3 routes from across the boundary zone
2. Currently preparing bid requests
3. Community based bussing, not neighborhood stops

PTO encouraged to build a carpooling network to/from bus stops



Extended Day Kindergarten

Allow for more enrichment of basic curriculum through hands on inquiry and play-based learning.

Additional time for specials exposure (phys ed, arts, technology, etc).

Tuition based--financial assistance available for families that may qualify



Enrichment and Activities Programming

School based enrichment opportunities

- Guest speakers
- Field trips
- Visiting exhibits

Volunteer donation for enrichment at enrollment. (\$60 per student)



Enrichment and Activities Programming

Fee based programs--financial assistance available for families that may qualify

Extended School Day
before school
after school
Fridays

Enrichment/clubs/activities
after school
Fridays



****All programs are contingent upon demand****

National School Lunch Program (NSLP)

federally assisted meal program operating in public and nonprofit private schools and residential child care institutions. It provides nutritionally balanced, low-cost or free lunches to children each school day.



International Baccalaureate

What IB can be-

- Empowering
- Engaging
- Challenging
- Life-changing

What IB is not-

- Exclusive
- Elitist
- Too difficult
- Only for some

IB for All

The logo for the International Baccalaureate (IB) is positioned between the words 'for' and 'All'. It consists of a circular emblem with a purple and green design, representing the organization's commitment to global education.

International Baccalaureate



K-5th Grade



6th-10th
Grade



11th & 12th
Grades

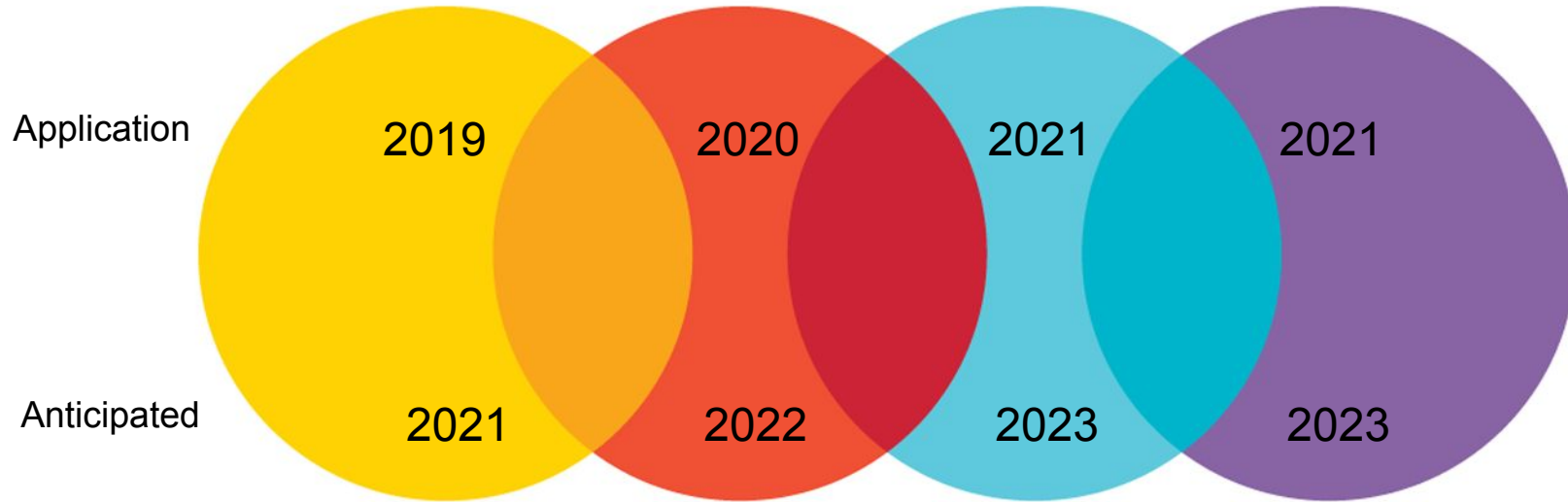


11th & 12th
Grades

- Emphasis on Learner Profile
- Liberal Arts approach
- Critical thinking, independently
- Asking the right questions



IB Planning at Forge



IB CONTINUUM
CONTINUUM DE L'IB
CONTINUO DEL IB

IB Planning at Forge

- IB Learner Profile
- PYP Transdisciplinary Themes
- Exhibition



IB Planning at Forge

- Agency

A commitment to **agency** in the enhanced **PYP** will create a culture within the learning community where students co-construct and self-adjust their learning experiences, building self-efficacy, a greater sense of learning ownership and contributing to their social, emotional and cognitive growth.



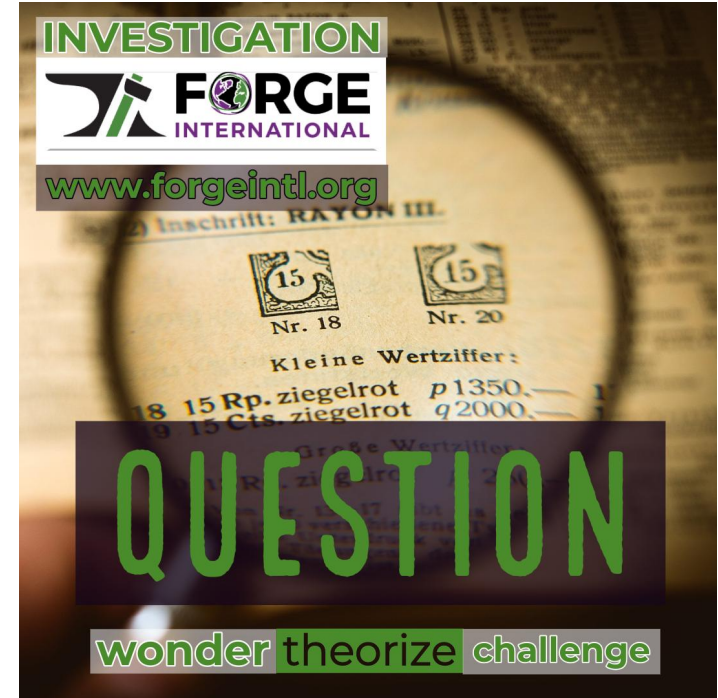
IB Planning at Forge

- Inquiry

The PYP curriculum is built around inquiry learning; learning by questioning, exploring and experimenting.

- Provocation

open-ended invitations for a child to explore and express a variety of thoughts, interests and ideas.



Hiring

Postings exist for elementary classroom, special education, Spanish, PE, and integrated arts. (12-15)

Likely posted in early March: school nurse (0.6 FTE), EL support, SpEd support, main office (reception/bookkeeping), custodial/maintenance, food/nutrition manager/support

Possible postings depending on availability of funds: extend nurse to full-time, school counselor



Support?

Join PTO (after the lottery draw)

Volunteer:
Time
Talent

Donate (after July 1)
Funds
Supplies



Lottery

Registration window closes Feb 25th

Lottery draw on Feb 26th @ 9:30a

Middleton Trolley Station
310 Cornell St.



Questions?

¿Preguntas?

micah.doramus@forgeintl.org



A Sage International School